

AVAILABLE INDUSTRIAL SITE

MCINTOSH ROAD INDUSTRIAL PARK



5374 McIntosh Road, Oxford, Calhoun, AL, 36203

Sale / Lease

For Sale: Yes
Sale Price: \$ 25,000.00 per acre
Pricing Information: Price is subject to negotiation based on capital investment and number of jobs created.

Zoning

Zoning: Heavy Industry

Property Details

Latitude: 33.572700
Longitude: -85.795700
Total Acreage: 161.5 Acre(s)
Available Acres: 130 Acre(s)
Largest Tract Available: 130 Acre(s)
Smallest Tract Available: Acre(s)
Expandable: Yes
Wetlands: Yes
Phase 1 Audit Done: Yes

Description

Leon Smith Parkway provides direct access to I-20. Access is at Exit 188. Atlanta, Ga approximately 90 miles East. Birmingham, AL approximately 60 miles West both via I-20.

For more information, please contact:

Calhoun County Economic Development Council
Don Hopper
(256) 237-3536
dhopper@calhouncountyedc.org

Economic Development Partnership of Alabama
1320 1st Avenue South
Birmingham, AL 35233
P 205.943.4700
gblalock@edpa.org
<https://www.edpa.org>

AVAILABLE INDUSTRIAL SITE

MCINTOSH ROAD INDUSTRIAL PARK



5374 McIntosh Road, Oxford, Calhoun, AL, 36203

Interstate/Highway

Interstate: I-20
To Interstate (miles): 3 Mile(s)
Interstate #2:
To Interstate #2 (miles):
Highway: 21
To Highway (miles): 6.00 Mile(s)

Rail

Carrier:

Electric

Provider: Alabama Power Company

Natural Gas

Provider: Spire
Pressure (bars): 54 Psi
Size of Main: 4"

Water

Provider: Oxford Water & Sewer
Size of Main: 8"

Telecommunications

Provider: AT&T
Fiber Available: Yes
DSL Available: Yes

Sewer

Provider:
Size of Main: 6"

For more information, please contact:

**Calhoun County Economic Development
Council
Don Hopper
(256) 237-3536
dhopper@calhouncountyedc.org**

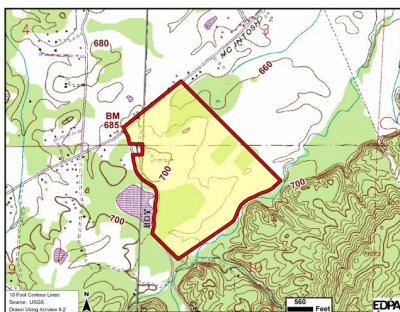
**Economic Development Partnership of
Alabama
1320 1st Avenue South
Birmingham, AL 35233
P 205.943.4700
gblalock@edpa.org
<https://www.edpa.org>**

AVAILABLE INDUSTRIAL SITE

MCINTOSH ROAD INDUSTRIAL PARK



5374 McIntosh Road, Oxford, Calhoun, AL, 36203



For more information, please contact:

Calhoun County Economic Development
Council
Don Hopper
(256) 237-3536
dhopper@calhouncountyedc.org

Economic Development Partnership of
Alabama
1320 1st Avenue South
Birmingham, AL 35233
P 205.943.4700
gblalock@edpa.org
<https://www.edpa.org>